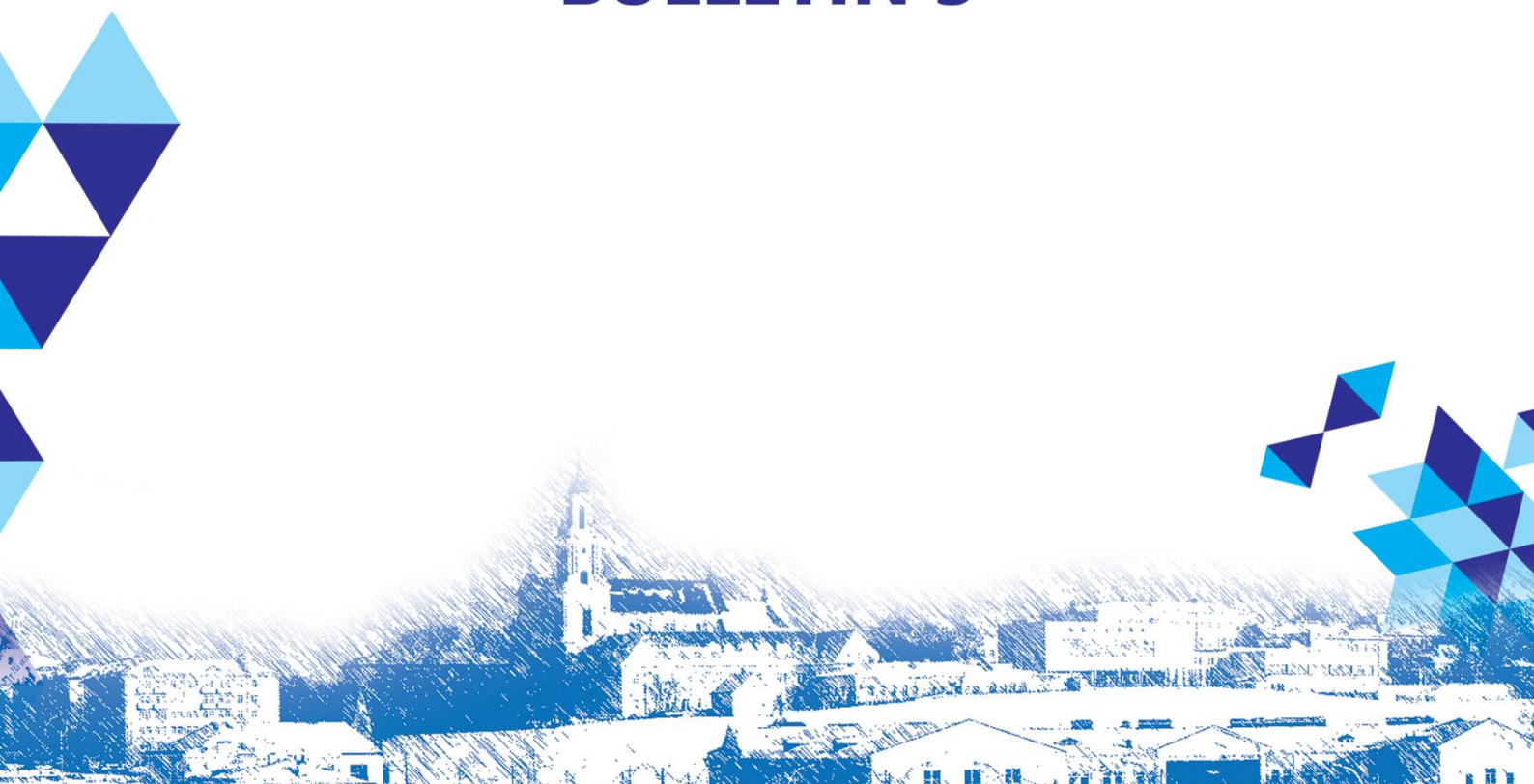




# OPEN GRODNO CUP 20-25.04.2017

**BULLETIN 3**





## **BULLETIN 3**

### **“GRODNO OPEN CUP– 2017”**

**World ranking stages (sprint, middle) of the  
International Orienteering Federation**

**Stages of the Belarusian Orienteering Federation Cup**

**The Grodno Region Open Championship**

**20-25 April 2017**

#### **COMPETITION REGION**



The town of Grodno is located in the West of Belarus. 265 km West of Minsk and 280 km North of Brest, 30 km from the border with the Republic of Lithuania and 20 km from the border with the Republic of Poland.



## ORGANIZERS

The competition will be held by the Belarusian Orienteering Federation, Grodno Region Orienteering Federation, the Department of Sports and Tourism of the Grodno Regional Executive Committee, the Grodno Town Executive Committee, the Yanka Kupala State University of Grodno and the "Kronan" orienteering club.



Competition Director:  
Edvard Stanislavovich Arodz  
+37529 588 99 11,  
[ed\\_91161@mail.ru](mailto:ed_91161@mail.ru)



Chief Referee:  
Dmitry Krapivko  
+37529 566 44 79,  
[freid-7@tut.by](mailto:freid-7@tut.by)



Chief Secretary:  
Viktor Shumel  
+37529 787 92 93,  
[555viktor@mail.ru](mailto:555viktor@mail.ru)



Deputy Chief Referee in charge of courses:  
Gennady Tridensky  
+37529 855 53 55



Deputy Chief Secretary in charge of applications:  
Tatiana Krapivko  
+37529 781 68 18,  
[kronan@tut.by](mailto:kronan@tut.by)



Deputy Chief Referee in charge of technical matters:  
Anatoly Sytsko



International Controller for the IOF:  
Lech Trzpil  
[lechtrzpil@wp.pl](mailto:lechtrzpil@wp.pl)



BOF Controller:  
Dmitry Davidovich  
+37533 340 19 88,  
[master\\_rb@tut.by](mailto:master_rb@tut.by)

Chief Referee at Start  
Chief Referee at Finish  
Chief/Inspector of 1<sup>st</sup> day course  
Chief/Inspector of 2<sup>nd</sup> day course  
Chief/Inspector of 3<sup>rd</sup> day course  
Chief/Inspector of 4<sup>th</sup> day course  
Chief/Inspector of 5<sup>th</sup> day course  
Chief/Inspector of 6<sup>th</sup> day course

Elena Orochko  
Denis Ivanov  
G. Tridensky/D. Krapivko  
E. Meleshko and G. Tridensky/D. Krapivko  
G. Tridensky/D. Krapivko  
P. Krasko/G. Tridensky  
D. Krapivko/E. Arodz  
A. Alekseyonok /D. Krapivko

## CONTACT DATA

Organizational matters (Russian, Polish):  
Edvard Stanislavovich Arodz +37529 588 99 11  
Organization matters (English):  
Dmitry Krapivko +37529 566 44 79  
Applications:  
Tatiana Krapivko +37529 781 68 18

e-mail: [kronan@tut.by](mailto:kronan@tut.by)  
Website of the competition: [kronan.by](http://kronan.by)

## GROUPS

The competition will be held for the following groups:  
M/W: 10, 12, 14, 16, 18, 21E, 21S, 35, 45, 50, 55, 60, 65.

On Days 4 and 5 of the competition groups M/W 21E will take part in a IOF WRE ranking start.

In case of small numbers of participants in a group (under 5), the organizers are entitled to unite the groups. Team rosters are not limited

## SCHEDULE

«GRODNO OPEN CUP – 2017»	Model competitions	<b><u>20.04.2017</u></b> <b><u>(Thursday)</u></b>	<b><u>Day 1</u></b> 12:00-13:30 – Registration at the competition arena. 14:00 – Middle distance start
		<b><u>21.04.2017</u></b> <b><u>(Friday)</u></b>	<b><u>Day 2</u></b> 12:00-13:30 – Registration at the competition arena 14:00 – Extended middle distance start
	MAIN RANKING	<b><u>22.04.2017</u></b> <b><u>(Saturday)</u></b>	<b><u>Day 3</u></b> 11:00-13:30 – Registration at the competition arena <b>14:00 – Classic distance</b>
		<b><u>23.04.2017</u></b> <b><u>(Sunday)</u></b>	<b><u>Day 4</u></b> 11:30-12:00 – Opening of the Grodno Cup 2017 competition. Model Competition award ceremony (per 2-day total) <b>13:00 – Middle distance. IOF WRE</b>
		<b><u>24.04.2017</u></b> <b><u>(Monday)</u></b>	<b><u>Day 5</u></b> <b>10:00 – Sprint distance. IOF WRE</b> 13:00 – Concert and lottery drawing based on participants' bib numbers 14:00 – “Grodno Open Cup – 2017” Award ceremony
	Champions' race	<b><u>25.04.2017</u></b> <b><u>(Tuesday)</u></b>	<b><u>Day 6</u></b> 10:00 – Start at middle distance 14:00 – Award ceremony for the “Champions' race”



## BIB NUMBERS

Bib numbers are issued by the organizers for the entire duration of the competition. The number is attached on the chest and is not to be removed while covering the courses. Upon completion of the competition the bib number remains with the participant.

## MARKER SYSTEM

The competition will employ SPORTident electronic markers. Use of personal SI-chips of any series is allowed. It is also possible to rent chips from the organizers.

## GPS-TRACKING

During the competition certain participants from groups M/W21E, selected by the organizers, will be provided with GPS-trackers.

Real-time observation of these participants' progress will be possible on location, as well as a link available on the competition's website.

## INFORMATION

Main and additional information per each day of the competition will be posted on the bulletin board in the participants' location area, as well as the competition's website. Information related to the start will be duplicated on the bulletin board located near the starting corridors.

## REFRESHMENTS

At the finish line drinks will be served, on certain days – hot tea. On April 22 and 23 a snack bar and O'café will be open at the finish line.

Addresses: [cafes](#), [cafeterias](#), [shops](#).

## MEDICAL ASSISTANCE

During each day of the competition an ambulance will be available. The participants are required to present a medical certificate allowing their participation. If a certificate is unavailable the participant is required to sign an acknowledgement of their own liability ([download form](#)).

## OBJECTIONS

Objections are to be submitted in writing to the Chief Secretary addressed to the Chief Referee of the competition. The decision shall be made at a meeting of the competition jury. The competition jury includes: L. Davidovich, Y. Alekseyev, S. Astrovlianchik.

## SUMMARIZING

In the personal rankings, places will be allocated based on the total time spent during each of the three days of the “Grodno Open Cup – 2017” competition’s main ranking stage.

The team results will be determined based on the highest number of points in three program events – a sum of points of the top 10 team members in each of the groups, according to the points table.

In case the points sums are equal, preference will be given to the team that has more first places (then second places, third etc.).

During the “Model competitions” places will be allocated based on the total time spent during each of the two days. All groups will be awarded.

In the “Chapnions’ race” the 10 participants who demonstrated the best results in the total ranking among all groups will be awarded.

**Points table for team ranking of the  
“Grodno Open Cup” competition**

Place	1	2	...	6	7	8	...	15	16	17	...	38	39	...
Points MW 21E	100	95	...	75	72	69	...	48	46	44	...	2	1	1
Points MW 21S	60	55	...	35	32	29	...	8	6	4	...	1	1	1
Points MW 12-18	80	75	...	55	52	49	...	28	26	24	...	1	1	1
Points MW 35-65	70	65	...	45	42	39	...	18	16	14	...	1	1	1

## AWARDS

**23.04.2017 at 11:30-12:00** Award ceremony for the “Model competitions” (based on 2-day totals) will take place at the [competition arena on 23.04](#). All groups will be awarded.

**24.04.2017 at 14:00** the award ceremony for the main ranking stage based on three days of competition will take place at Sovetskaya Square ([near the “DK Tekstilschikov”](#)).

The teams to take prize places will be awarded with cups and diplomas.

The personal ranking winners and prize recipients in all groups will be awarded with diplomas, medals and prizes.

The world ranking stage (IOF WRE) participants will be awarded separately. The winners and prize recipients will be awarded with monetary prizes in the following amounts: 1<sup>st</sup> place – 120 BYN, 2<sup>nd</sup> place – 80 BYN, 3<sup>rd</sup> place – 40 BYN. The six strongest participants will receive commemorative prizes.

**25.04.2017 at 14:00** the “Champions’ race” award ceremony will take place. The top 10 participants in the general ranking among all groups will be awarded.

## LOTTERY

Before the award ceremony on 24.04.2017 a lottery will be held among the participants, based on their bib numbers. Each participant’s bib number must be present.



# WEATHER

Чт, 20 апреля				Пт, 21 апреля				Сб, 22 апреля			
Ночь	Утро	День	Вечер	Ночь	Утро	День	Вечер	Ночь	Утро	День	Вечер
0	-3	+7	+5	-1	+1	+6	+7	+7	+5	+9	+5
Ветер, м/с				Ветер, м/с				Ветер, м/с			
3 СВ	3 СВ	2 СВ	2 С	3 З	5 ЮЗ	8 З	7 ЮЗ	7 З	7 З	8 З	7 З
Осадки, мм				Осадки, мм				Осадки, мм			
0	0	0	0	0	0	0,1	0,1	0,3	0,9	0,8	1,8
Вс, 23 апреля				Пн, 24 апреля				Вт, 25 апреля			
Ночь	Утро	День	Вечер	Ночь	Утро	День	Вечер	Ночь	Утро	День	Вечер
+1	+4	+6	+4	+1	+3	+8	+4	-1	+2	+8	+5
Ветер, м/с				Ветер, м/с				Ветер, м/с			
5 З	7 З	7 З	6 З	4 З	4 С	5 СЗ	4 СЗ	3 З	5 ЮЗ	7 ЮЗ	6 ЮЗ
Осадки, мм				Осадки, мм				Осадки, мм			
0	0,6	2,8	1,2	0,4	0,4	0,4	0,4	0	0	0,2	1,2

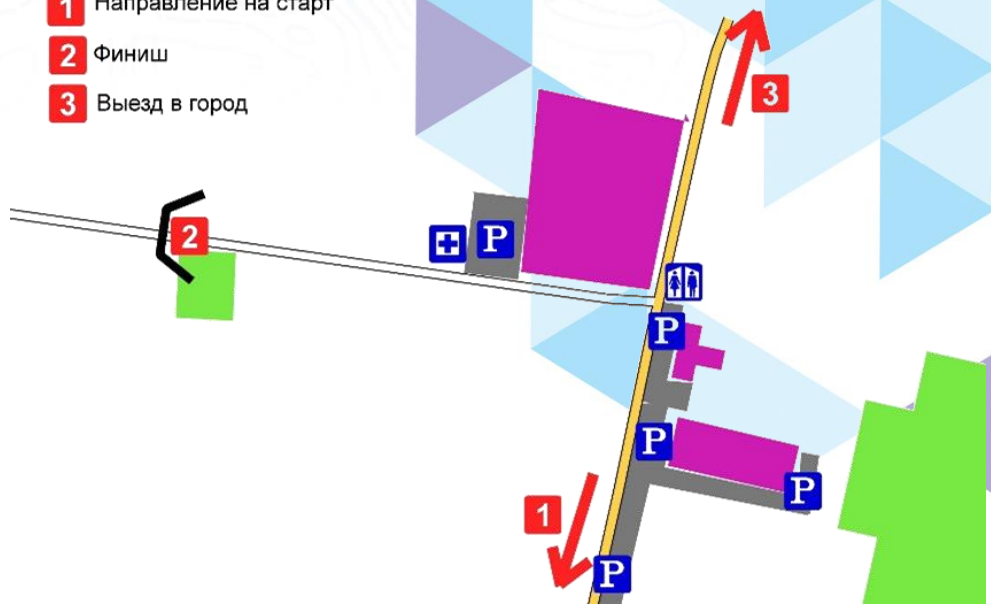
**Middle distance 20.04.2017 (Thursday)**  
**“Prigodichi”**

Competition arena:

The arena includes: a parking lot for cars and buses, a participant location area, restrooms. The participants may do warm-ups in the location area. For your own comfort and safety, please do not leave your vehicles outside the specially designated area.

**The start line is located 1,7 km away from the location area (down the road).**

- 1 Направление на старт
- 2 Финиш
- 3 Выезд в город



Approach to arena:

One can reach the arena via personal transport. Take the Skidel highway out of Grodno in the Minsk direction. The main road forks and turns will have direction signs.

Arena coordinates:

53°39'4"N (53.651174)

23°55'58"E (23.932756)

It is also possible to reach the destination via buses №13, 18, 27, getting off at bus stop «SMY-4», after which one must walk 1,7 km. [Timetable.](#)

Organizer's transport:

Participants who have previously booked seats will be brought to the arena. The bus will depart the “Grodno Bus Station” from the parking lot near the suburban bus platform.

Coordiantes:

53°40'38"N (53.677329)

23°50'40" (23.844511)

Departure from bus station: 11:30, 12:30

Return departure: in accordance with bus filling

Cost of transport:1 BYN (one way)

## Starting procedure

Free start when ready, 14.00 through 15.30 (30 second intervals).

Legends will be located at the start line and available at any time before the start.

While in the starting corridor the participants are to clean and check their chips. After that the participants are to approach their group map and wait for the long starting signal.

Participants may leave their clothes at the starting line. Every 30 minutes bags with clothing will be taken to the finish line.



Area:

The area has a gullied and braced surface. The terrain is highly rugged, altitude differences can reach 25 meters at slopes. Road are practically absent.



Dangerous area:

Precipices, steep slopes leading to precipices, as well as precipices with a negative slope up to 10 meters, marked with symbol 201.0. (TTTT). In addition, the steep slopes include spilling of fine shell stones, which hinder high-speed movement.

Additional information:

Running on fields is forbidden.  
The course will include observation points for nearly each group.

Map:

Map size- A3.  
Map scale - 1:5000.  
Contour interval - 5 m.  
Legends are printed on the maps.  
The map is limited in the North by a field, in the South by the river Neman, the West does not contain a definite border, in the East – a dacha settlement.  
For MW10 groups the courses will be marked.  
Drawing: Aleksandr Efimenko, 2015.  
Editing: Gennady Tridensky, 2016-2017.  
Course Manager – Gennady Tridensky  
Course Inspector – Dmitry Krapivko

Winner's time:

35-40 minutes.

Control time:

2 hours.

Uniform:

Closed-type clothing is recommended, as well as sports footwear with metal spikes.

Course parameters:

Group	Length, km	Number of check-points	Group	Length, km	Number of check-points
M10	1340	7	W10	1340	7
M12	1330	8	W12	1330	8
M14	2150	12	W14	1330	8
M16	2340	12	W16	2280	13
M18	2450	13	W18	2340	12
M21E	3430	19	W21E	3180	20
M21S	2630	13	W21S	2390	14
M35	3180	20	W35	2450	13
M45	2790	16	W45	2340	12
M50	2790	16	W50	2280	13
M55	2450	13	W55	2280	13
M60	2450	13	W60	2070	12
M65	2340	12	W65	2070	12

## Extended middle distance 21.04.2017 (Friday) “Korobchitsy”

### Competition arena:

The arena includes: a parking lot for cars and buses, participant location area, the finish line, a snack bar, tents for changing, shower, restrooms. The use of barbecues is allowed in the tent camp area, a place for making fires is present. The participants can do warm-ups both in the location area and the start area. **The start line is 500 m away from the location area, per marking.**



### Approach to arena:

One can reach the arena via personal transport. Take Suvorov str. out of Grodno in the direction of the Bruzgi village.

Arena coordinates:

[53°36'7"N \(53.601981\)](#)

[23°44'19"E \(23.738708\)](#)

The main road forks and turns will have direction signs.

### Organizer's transport:

Participants who have previously booked seats will be brought to the arena. The bus will depart the “Grodno Bus Station” from the parking lot near the suburban bus platform.

Coordinates:

[53°40'38"N \(53.677329\)](#)

[23°50'40" \(23.844511\)](#)

The bus will make the following stops to pick up the participants:

- Sovetskaya Square ([on the map](#))
- “Regional Philharmonic” ([on the map](#))

Departure from bus station: 11:30, 12:30

Return departure: in accordance with bus filling

Cost of transport: 1 BYN (one way)

### Starting procedure:

Free start when ready, 14.00 through 15.30 (30 second intervals).

Legends will be located at the start line and available at any time before the start.

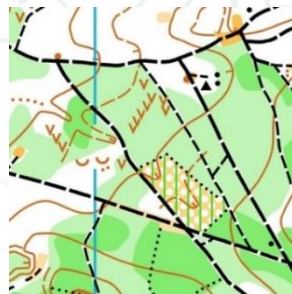
While in the starting corridor the participants are to clean and check their chips. After that the participants are to approach their group map and wait for the long starting signal.

Participants may leave their clothes at the starting line. Every 30 minutes bags with clothing will be taken to the finish line.



Area:

Aeolian terrain, altitude differences up to 25 meters at slopes. Forest terrain of various negotiability. The map includes forest negotiability classes as of July. Hydrographic characteristics are not well expressed. Branched network of paths and roads.



Dangerous areas:

Steep skiing slopes, dirt road with low-intensity traffic in the Western part of the map. Movement from start to finish strictly in accordance with the markings.

Map:

Map size - A4.  
Map scale - 1:10000  
Contour interval - 5 m.  
Legends are printed on the maps.  
Maps are airtight.  
For MW10 groups the courses will be marked.  
Drawing: Aleksandr Efimenko, 2015.  
Editing: Gennady Tridensky, 2016-2017.  
Course Manager – Yevgeni Meleshko and Gennady Tridesnky  
Course Inspector – Dmitry Krapivko

Winner's time:

40-45 minutes.

Control time:

2 hours.

Uniform:

Closed clothing is recommended.

Course parameters:

Group	Length, km	Number of check-points	Group	Length, km	Number of check-points
M10	1870	10	W10	1870	10
M12	2730	13	W12	2740	11
M14	3160	13	W14	3090	12
M16	3370	12	W16	3070	12
M18	5100	16	W18	4250	16
M21E	6500	20	W21E	5670	18
M21S	5040	15	W21S	3850	14
M35	5670	18	W35	4630	15
M45	5090	15	W45	3810	15
M50	5090	15	W50	3810	15
M55	4180	16	W55	3070	12
M60	4180	16	W60	3000	15
M65	3370	12	W65	3000	15

## Classic distance 22.04.2017 (Saturday) “Sanniki Lake” (new map)

### Competition arena:

The arena includes: a parking lot for cars and buses, a participant location area, the finish line, a snack bar, a cafe, tent for changing, restrooms, GPS-tracker and online results viewing area.

The participants can do warm-ups both in the location area and the start area. **The start line is located 550 m away from the location area, along the road.**



### Approach to arena:

One can reach the arena via personal transport. Take Suvorov str. out of Grodno in the direction of the Karolino settlement.

[Arena coordinates:](#)

[53°37'54"N \(53.631772\)](#)

[23°39'27"E \(23.657411\)](#)

The main road forks and turns will have direction signs.

### Organizer's transport:

Participants who have previously booked seats will be brought to the arena. The bus will depart the “Grodno Bus Station” from the parking lot near the suburban bus platform.

[Coordinates:](#)

[53°40'38"N \(53.677329\)](#)

[23°50'40" \(23.844511\)](#)

The bus will make the following stops to pick up the participants:

- Sovetskaya Square ([on the map](#))
- “Regional Philharmonic” ([on the map](#))

Departure from bus station: 11:30

Return departure: in accordance with bus filling

Cost of transport: 1.5 BYN (one way)

### Starting procedure:

#### Зоны стартового коридора



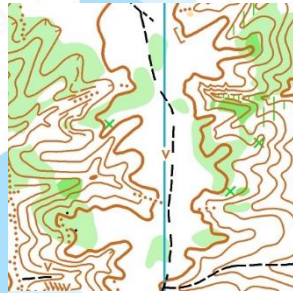
Interval start according to the start protocol, from 14.00

Participants enter the first zone 4 minutes before start. Here they must clean and check their chips. Those who start with a GPS tracker receive their device. In the second zone the participant gets a checkpoint legend. The third zone involves a minute of waiting. In the fourth the participant stands near their map and waits for the long starting signal.



Participants may leave their clothes at the starting line. Every 30 minutes bags with clothing will be taken to the finish line.

**Area:** Hybrid forests, various negotiability. Hilly terrain, altitude differences from 25 to 70 meters at slopes, the map includes many artificial forms of terrain.



**Dangerous areas:** Steep slopes, rock walls and sinks.

**Map:** Map size- A4.  
Map scale - 1:7500 for MW 45-65 groups  
1:10000 for other groups  
Contour interval - 5 m.  
Legends are printed on the maps.  
For MW10 groups the courses will be marked.  
Drawing: Aleksandr Efimenko, 2016.  
Editing: Gennady Tridensky, 2016-2017.  
Course Manager – Gennady Tridensky  
Course Inspector – Dmitry Krapivko

**Winner's time:** 50-60 minutes.

**Control time:** 2,5 hours.

**Uniform:** Closed clothing is recommended.

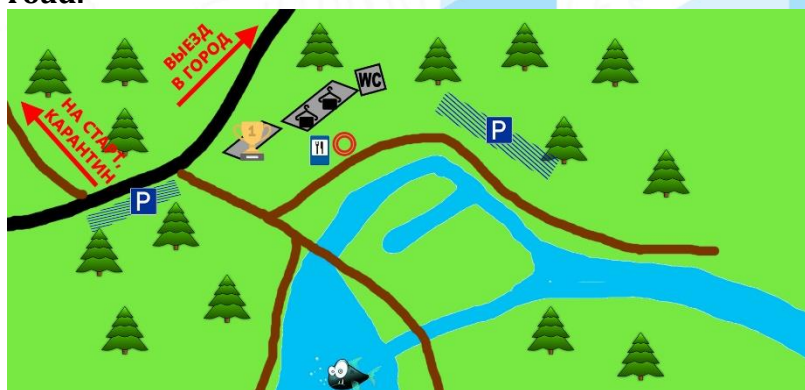
**Course parameters:**

Group	Length, km	Number of check-points	Group	Length, km	Number of check-points
M10	2010	9	W10	2010	9
M12	2220	10	W12	2220	10
M14	3360	12	W14	3590	13
M16	4320	16	W16	4220	16
M18	4790	17	W18	4320	16
M21E	8220	28	W21E	6890	25
M21S	5360	18	W21S	4220	14
M35	6890	25	W35	4790	17
M45	5260	19	W45	4320	16
M50	5260	19	W50	4220	16
M55	4790	17	W55	4220	16
M60	4790	17	W60	3740	13
M65	4320	16	W65	3740	13

## Middle distance 23.04.2017 (Sunday) “Augustov Channel-2” (new map)

### Competition arena:

The arena includes: a parking lot for cars and buses, participant location area, the opening and award ceremony area, the finish line, a snack bar, a cafe, tents for changing, restrooms, GPS-tracker and online results viewing area. The participants can do warm-ups both in the location area and the start area. **The start line is located 1,7 km away from the location area, along the road.**



### Approach to arena:

One can reach the arena via personal transport. Take Sovetskikh Pogranichnikov Str. out of Grodno in the direction of the Sapotskino settlement.

Arena coordinates:

[53°51'50"N \(53.863959\)](#)

[23°37'22"E \(23.622836\)](#)

The main road forks and turns will have direction signs.

### Organizer's transport:

Participants who have previously booked seats will be brought to the arena. The bus will depart the “Grodno Bus Station” from the parking lot near the suburban bus platform.

Coordinates:

[53°40'38"N \(53.677329\)](#)

[23°50'40" \(23.844511\)](#)

The bus will make the following stops to pick up the participants:

- Sovetskaya Square ([on the map](#))

- “Shoe Factory” ([on the map](#))

Departure from bus station: 10:30

Return departure: in accordance with bus filling

Cost of transport: 2 BYN (one way)

### Starting procedure:

#### Зоны стартового коридора



Interval start according to the start protocol, from 13.00

Participants enter the first zone 4 minutes before start. Here they must clean and check their chips. Those who start with a GPS tracker receive their device.

In the second zone the participant gets a checkpoint legend. The third zone involves a minute of waiting. In the fourth the participant stands near their map and waits for the long starting signal.



Participants may leave their clothes at the starting line. Every 30 minutes bags with clothing will be taken to the finish line.

**Starting procedure  
M/W 21E:**

**For M/W 21E groups a quarantine zone will be created.**

Participants must register in the quarantine zone before **13:00**.

The quarantine zone is located in the start area. Restrooms and tents for changing will be set up for participants in the quarantine zone.

**Area:**

Forest of various negotiability, mixed breeds. Altitude differences up to 25 meters at slopes.



Special symbols on map -  hole, terrace.

**Dangerous areas:**

Asphalt road crossing to be done only in strictly designated places.  
Forest removal is done on the map.

**Map:**

Map size – A3.

Map scale - 1:10000

Contour interval – 2,5 m.

Legends are printed on the map.

For MW10 groups the courses will be marked.

Drawing: Sergei Vorobei, Sergei Usenko, 2017.

Course Manager – Pavel Krasko

Course Inspector – Gennady Tridensky

IOF Controller – Lech Trzypil

**Winner's time:**

35-40 minutes.

**Control time:**

2 hours.

**Uniform:**

Closed clothing is recommended.

**Course parameters:**

Group	Length, km	Num- ber of check- points	Group	Length, km	Number of check- points
M10	2760	8	W10	2760	8
M12	2670	7	W12	2670	7
M14	4090	13	W14	3260	9
M16	4190	14	W16	4090	13
M18	5940	20	W18	4190	14
M21E	8160	29	W21E	6440	23
M21S	5940	20	W21S	4440	17
M35	6440	23	W35	5880	20
M45	5880	20	W45	4660	16
M50	4950	16	W50	4210	14
M55	4660	16	W55	3990	13
M60	4210	14	W60	3080	12
M65	3990	13	W65	3080	12

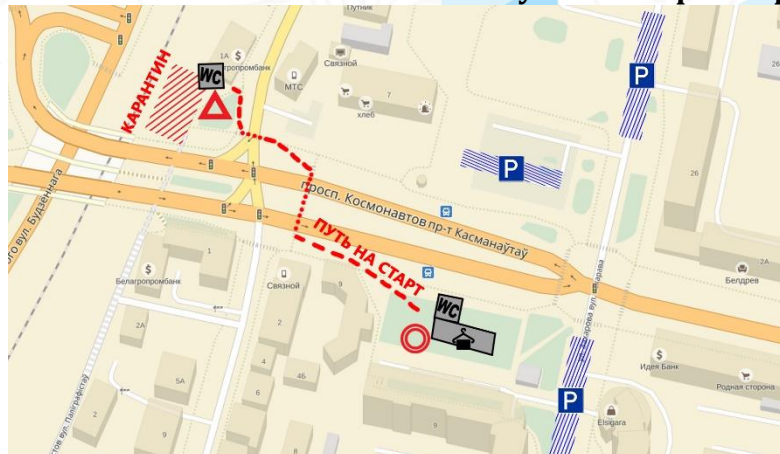
## Sprint course 24.04.2017 (Monday)

### “Skidel market” (new map)

Competition arena:

The arena will be located in the center of town near the bus station. At the start area participants will be able to use restrooms. At the finish line the following will be located: location participant area, restrooms, tents for changing, GPS-tracker and online results viewing area.

**The start line is located 150 m away from the participant location area.**



Approach to arena:

One can reach the arena via personal and public transport.

Coordinates:

[53°40'34"N \(53.676127\)](#)

[23°50'36"E \(23.843397\)](#)

Public transport [timetable](#). Get off at the “Avtovokzal” stop.

Starting procedure:



Participants enter the first zone 4 minutes before start. Here they must clean and check their chips. Those who start with a GPS tracker receive their device. In the second zone the participant gets a checkpoint legend. The third zone involves a minute of waiting. In the fourth the participant stands near their map and waits for the long starting signal.

**Starting procedure for M/W 21E:**

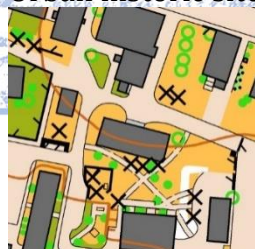
**For M/W 21E groups a quarantine zone will be created.**

In the quarantine zone they must register before **10:00**.

The quarantine zone is located near the start area. A restroom and a tent for changing will be set up for the participants in the quarantine zone.

Area:

Urban historic site, market territory, modern multistoried development.





Dangerous areas:

Low-intensity car traffic in internal yard areas, clotheslines, steep staircases and chutes, sheer walls.  
It is forbidden to cross areas marked with the following ISSOM signs (see drawing).



**Motion plan for the underground pedestrian crossing:**



Map:

Map size - A4.

Map scale - 1:4000

Contour interval – 2,5 m.

Legends are printed on the maps and are handed out in the starting corridor.

For MW10 groups courses will be marked.

Drawing: Dmitry Krapivko, 2016-2017.

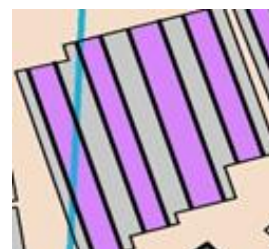
Course Manager – Dmitry Krapivko

Course Inspector – Edvard Arodz

IOF Controller – Lech Trzpil

Special symbols on map:

- trade aisles within the market will be marked on the map using symbol 526.002 (canopy), and in some areas they will also include the 714 ISSOM symbol:



Presence of inspection checkpoints for groups: M18, 21E, 35, 45, 55; W21E, 35.

Winner's time:

12-15 minutes.

Control time:

For all groups: 45 minutes.

Uniform:

No limitations.

Course parameters:

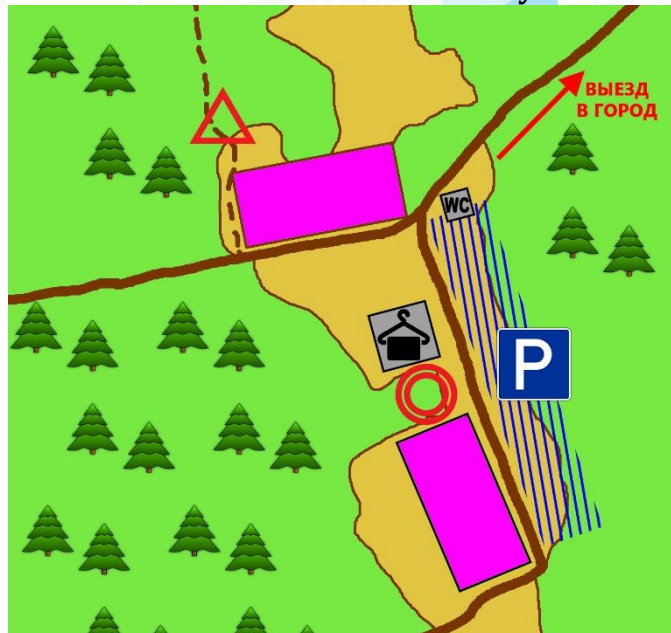
Group	Length, km	Number of check-points	Group	Length, km	Number of check-points
M10	1000	10	W10	1000	10
M12	1660	13	W12	1660	13
M14	2220	13	W14	2220	13
M16	2240	13	W16	2240	13
M18	3700	26	W18	2240	13
M21E	4000	28	W21E	3700	26
M21S	3210	23	W21S	2500	18
M35	3700	26	W35	2570	19
M45	3700	26	W45	2500	19
M50	2570	19	W50	2500	19
M55	2570	19	W55	2500	19
M60	2500	18	W60	2500	19
M65	2500	18	W65	1860	16

## Middle distance 25.04.2017 (Tuesday) “Novoselki”

### Competition area:

The arena includes: a parking lot for cars and buses, a participant location area, an award ceremony area, the finish line, tents for changing, restrooms. Participants can do warm-ups both in the location area and at the starting area.

**The start line is located 100 m away from the location area.**



### Approach to arena:

One can reach the arena via personal vehicle. Take Sovetskikh Pogranichnikov str. out of Grodno in the direction of the Sapotskino settlement.

[Arena coordinates:](#)

[53°40'58"N \(53.682858\)](#)

[23°40'32"E \(23.675438\)](#)

The main road forks and turns will have direction signs.

### Organizer's transport:

Participants who have previously booked seats will be brought to the arena. The bus will depart the “Grodno Bus Station” from the parking lot near the suburban bus platform.

[Coordinates:](#)

[53°40'38"N \(53.677329\)](#)

[23°50'40" \(23.844511\)](#)

The bus will make the following stops to pick up the participants:

- Sovetskaya Square ([on the map](#))
- “Shoe Factory” ([on the map](#))

Departure from bus station: 8:15

Return departure: in accordance with bus filling

Cost of transport: 1 BYN (one way)

### Starting procedure:

Mass start at 10.00 for male groups, at 10.15 for female groups.

Maps are individual for participants. Legends will be printed on the maps.

Participants must arrive at the starting area 10 minutes before the start. In this area one must clean and check their chip.



Area:

Forest, various negotiability, mixed breeds. Altitude differences up to 25 meters at slopes, hilly terrain.



Dangerous areas:

Steep slopes, rock walls.  
Forest removal is done on the map, some removal routes may not be marked on the map.

Map:

Map size - A4.  
Map scale - 1:10000  
Contour interval – 2,5 m.  
Legends are printed on the map.  
For MW10 groups the courses will be marked.  
Drawing: Sergei Vorobei, 2015.  
Course Manager – Aleksei Alekeyonok  
Course Inspector – Dmitry Krapivko

Winner's time:

35-40 minutes.

Control time:

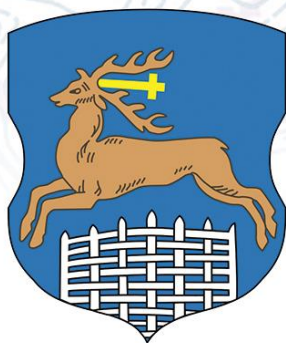
2 hours.

Uniform:

Closed clothing is recommended.

Course parameters:

Group	Length, km	Number of check-points	Group	Length, km	Number of check-points
M10	1510	6	W10	1510	6
M12	2130	8	W12	2130	8
M14	3070	12	W14	3020	11
M16	4730	20	W16	4230	18
M18	5040	22	W18	4730	20
M21E	6020	22	W21E	5040	22
M21S	3670	15	W21S	3000	12
M35	5040	22	W35	4720	20
M45	4720	20	W45	3670	15
M50	4090	15	W50	3510	14
M55	3670	15	W55	3000	12
M60	3510	14	W60	2190	10
M65	3000	12	W65	2190	10



*Nivāsan*



[www.kronan.by](http://www.kronan.by)

